

# Milk Yield, Somatic Cell Counts and Risk of Removal from the Herd for Dairy Cows after Covered Teat Canal Injury

K. Querengässer,<sup>1</sup> T. Geishauser,<sup>2</sup> M. Nitschke<sup>1</sup>

<sup>1</sup>Veterinary Clinic Babenhausen, 87727 Babenhausen, Germany

<sup>2</sup>Department of Population Medicine, Ontario Veterinary College, University of Guelph, Guelph, Ontario N1G 2W1, Canada

## Abstract

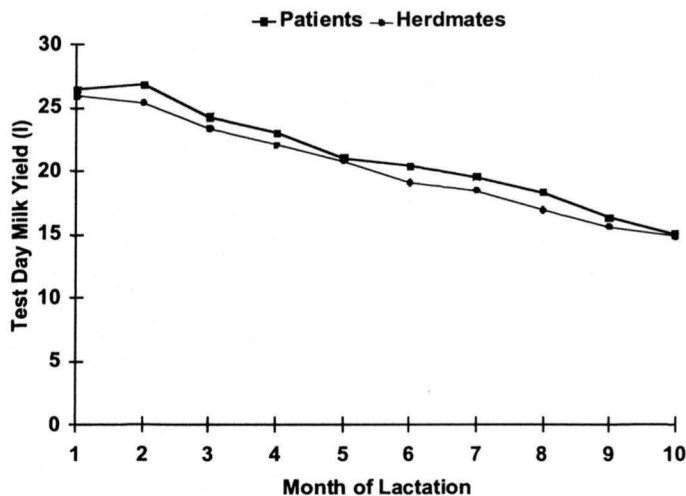
The objective of the study reported here was to evaluate milk yield, somatic cell count (SCC), and risk of removal of cows from the herd after covered teat injury. In covered teat injuries the teat skin is relatively undamaged. Eighty-one patients were used for this study. Teat injuries were diagnosed and treated using endoscopy (Medl et al. 1994). After treatment teats were rested for 3 x 3 days (Geishauser et al. 1998). Each patient was matched to three herdmates by breed, age and calving date. Data on milk yield and SCC were available from DHI records.

Test day milk yields (Fig. 1) and lactational milk yields were equal in cows with covered teat injury and

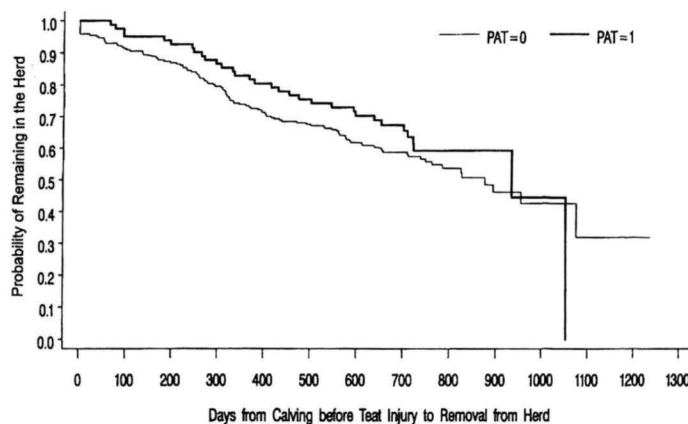
herdmates during the lactation the injury was diagnosed, and in the subsequent lactation. Calving interval in the year the injury was diagnosed, and the time cows lived in the herd (Fig. 2) were also equal. However, covered teat injuries significantly increased test day SCC on average by 128,000 cells/ml milk (Fig. 3). We conclude that diagnosis and treatment of covered teat injuries using endoscopy may be useful to keep cows milking after teat injuries.

## References

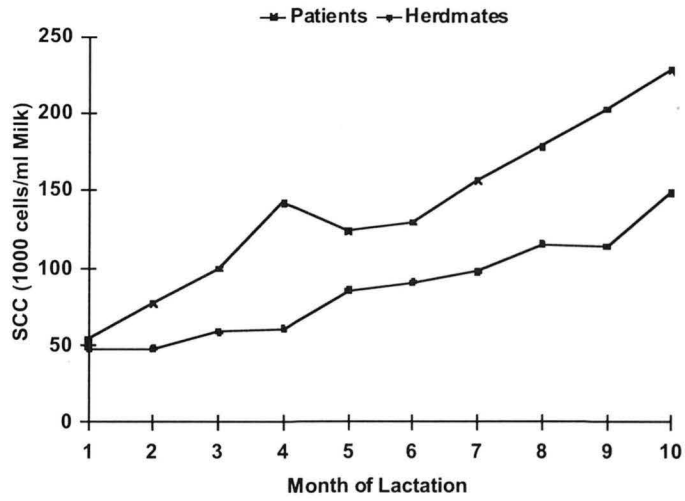
- Medl, M., K. Querengässer, C. Wagner, S. Paarmann and P. Rüschi. 1994. Zur Abklärung und Behandlung von Zitzenstenosen mittels Endoskopie. *Tierärztl. Prax.* 22:532-537.  
 Geishauser, T., K. Querengässer and M. Medl. 1998: Covered teat canal injuries in dairy cows - an update. *Comp. Cont. Educ.* 20:S251-S257.



**Figure 1.** Test day milk yield (l) in patients with covered teat injury or in herdmates. Medians are given for the months 1 to 10 in the lactation when the injury was diagnosed. Covered teat injuries were diagnosed at a median of 54 days in milk (interquartile range: 4 to 148 days)



**Figure 2.** Probability of remaining in the herd in patients with covered teat injury (thick line) and in herdmates (thin line).



**Figure 3.** Test day SCC (1000 cells/ml milk) in patients with covered teat injury or in herdmates. Medians are given for the months 1 to 10 in the lactation when the injury was diagnosed.